

INPERVIUS

PERMANENT CONCRETE MOISTURE CONTROL



WATERPROOF CONCRETE INTEGRALLY FOR PERMANENT MOISTURE CONTROL!

INPERVIUS admix reduces permeability by >80%, while increasing concrete's compressive strength by an average of 10% and flexural strength by 5%. It further reduces surface craze cracks, minimizes curl, and significantly improves and facilitates placement and finishing.

INPERVIUS is added to the mix water prior to the addition of Portland cement, at a dose of 10 fluid ounces per 100 lbs. of cement, not including pozzolanic materials, such as Fly Ash or Slag.

INPERVIUS CURE is a proprietary curing agent which promotes all of the benefits of a water cure without the associated labor costs and further reduces permeability up to 95%.

INPERVIUS CURE effectively retards evaporation during the curing process, providing a porosity coating element to further slow the rate of water evaporation. It penetrates past the surface, hydrating with unreacted alkali, further enhancing CSH gel formation within the capillary voids created during the curing process. Because of its penetrating properties, **INPERVIUS CURE** does not affect surface bonding quality.

SYSTEM ADVANTAGES

- > 90% permeability reduction.
- Permanent moisture vapor emission control.
- Increased cement hydration by >50%.
- Increased compressive & flexural strength.
- Very little to no bleed water.
- Easier concrete placement and finish.
- Visible improvement in integral color.
- Significant reduction in surface craze cracks.
- Minimizes curl.
- Permanent solution against dusting & efflorescence.
- The perfect base for flooring adhesives, coatings, or polished concrete.

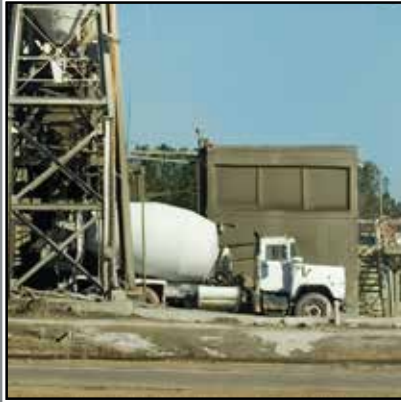
Concrete
earth®

INPERVIUS.COM

1-833-345-5625

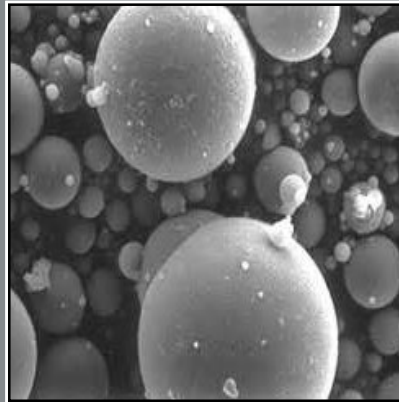
INPERVIUS

PERMANENT CONCRETE MOISTURE CONTROL



READY MIX

+



INPERVIUS

+



INPERVIUS CURE

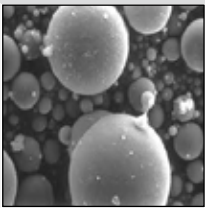
LIFE OF THE CONCRETE WARRANTY

ACCELERATED SCHEDULES WITHOUT FEAR OF MOISTURE!

21 DAYS from date of pour to install flooring or coatings.

NO MOISTURE TESTING or CORE REQUIREMENTS.

Backed by a **LIFE OF THE CONCRETE WARRANTY** against moisture related failures.



INPERVIUS is your final answer to moisture emission related failures. The combination of the cement hydration optimizing admixture and the uniquely formulated curing compound, results in HPC with permanent, integral moisture emission control.



Our useful "Life of the Concrete" warranty against internal moisture emissions related failures is your peace of mind guarantee against the unknown contingencies with moisture mitigation and related failure costs. Gain total confidence in the long term performance and sustainability of your concrete structures with **INPERVIUS APPLIED SYSTEM.**

SPECS FOR 03300 & 09610 AVAILABLE TO QUALIFIED PROFESSIONALS.

INPERVIUS TREATED CONCRETE PROVIDES:

- Permanent moisture vapor emission control.
- Increased cement hydration by > 50%.
- Improved compressive and flexural strength.
- Minimal bleed water.
- Easier concrete placement and finishing.
- Visible improvement in integral color depth.
- Significant reduction in surface craze/plastic shrinkage cracks.
- Reduced curl.
- Permanent solution to dusting and efflorescence.
- Excellent resistance to de-icing chemical damage for exterior concrete.
- Protection against internal concrete water freeze-thaw damage.
- A perfect base for flooring adhesives, coatings, or polished concrete.

INPERVIUS.COM

1-833-345-5625